



Winter
Wallflowers



WINTER WALLFLOWERS is a unique dingbat font, featuring 25 unique hand drawn wallpaper tiles and their accompanying icons for standalone use.

How to use this font for seamless wallpaper patterns:

In Adobe Illustrator or InDesign, simply type the letter associated with the pattern you desire to use, and set the leading to have the same size as the font size. *For example, if the font size is 72pt, set the leading at 72pt.* In applications such as Microsoft Word, the patterns will automatically seam up and there will be no need to alter the leading.

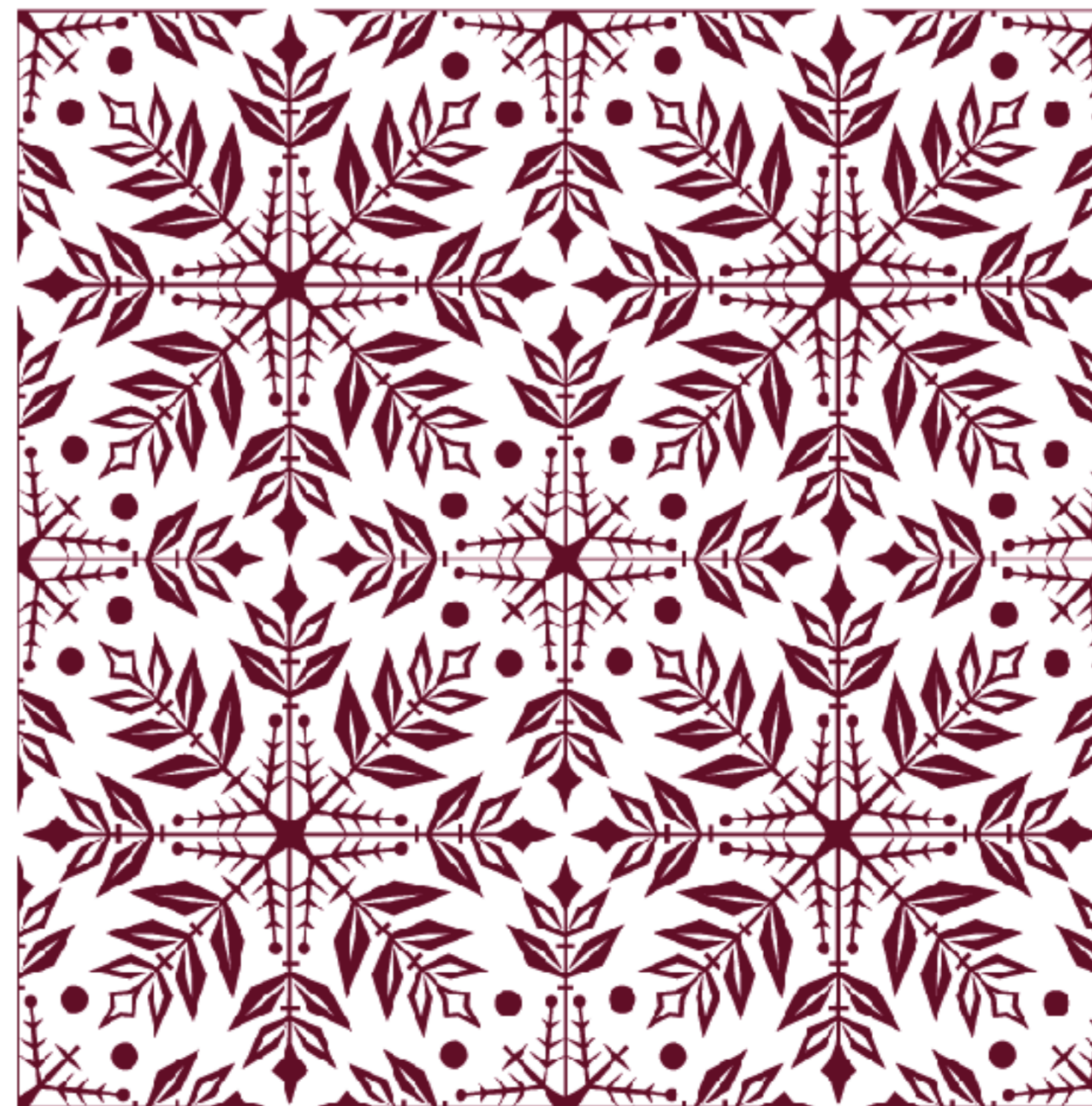
t

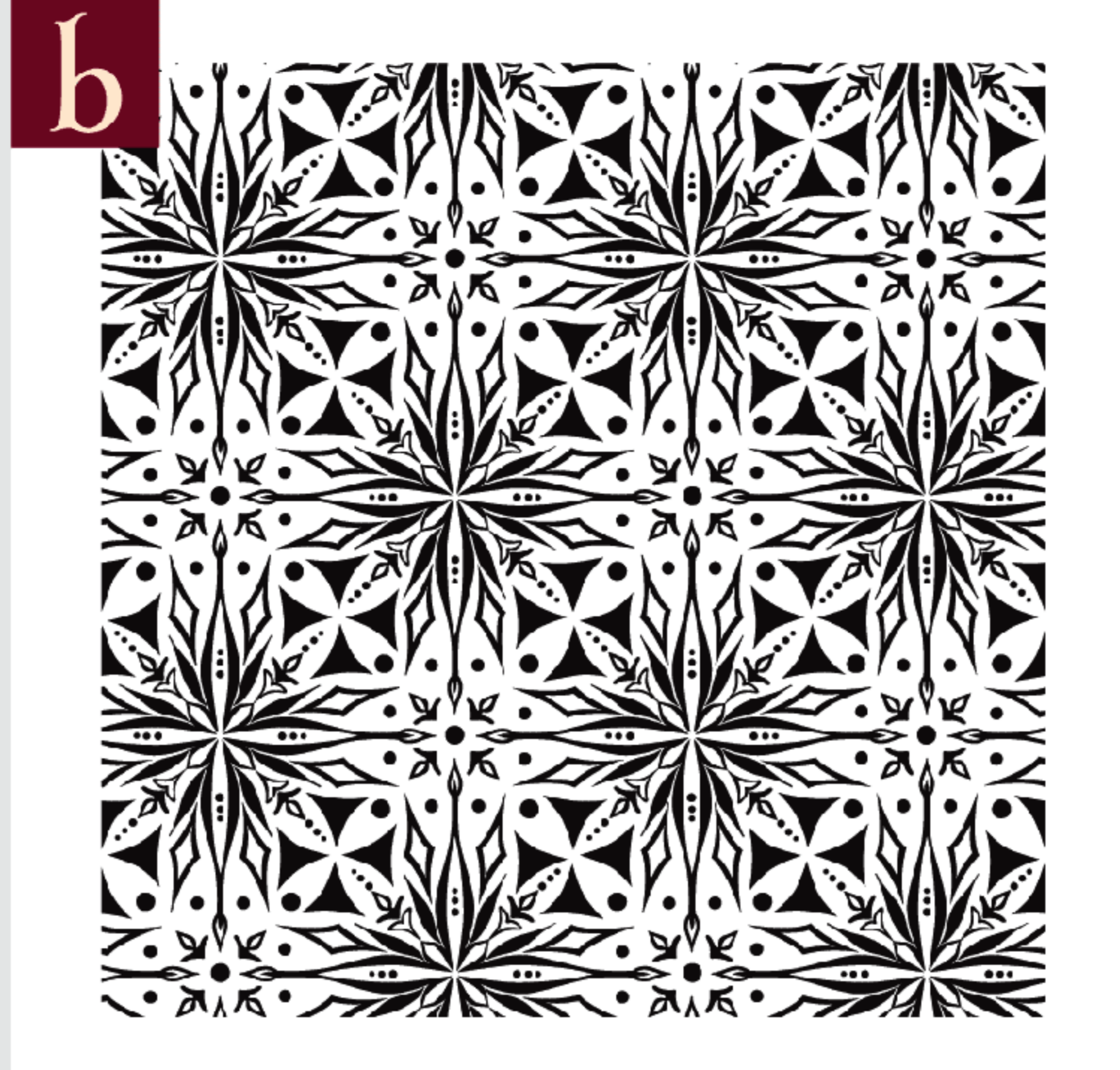
=



tt
tt

=

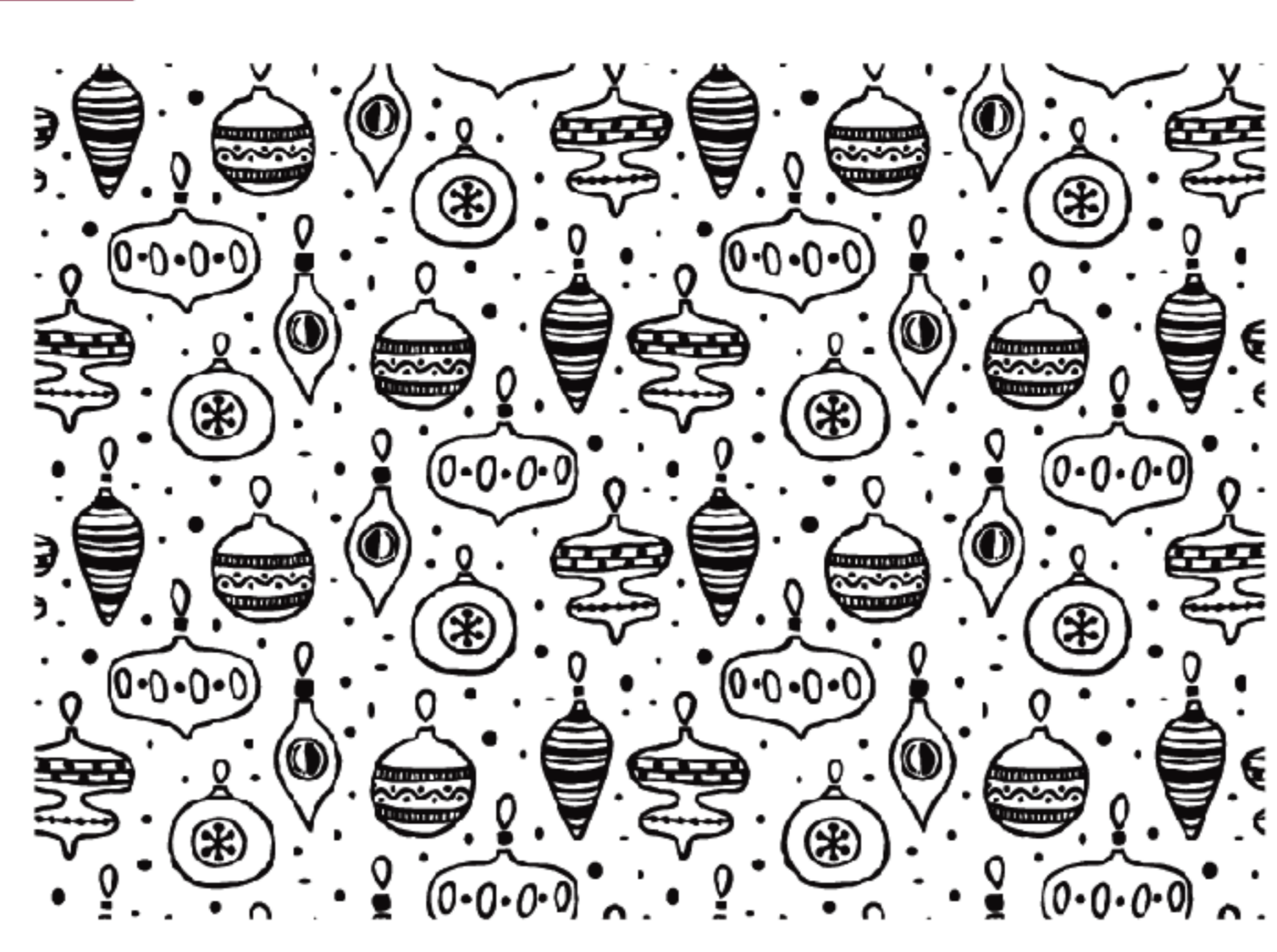




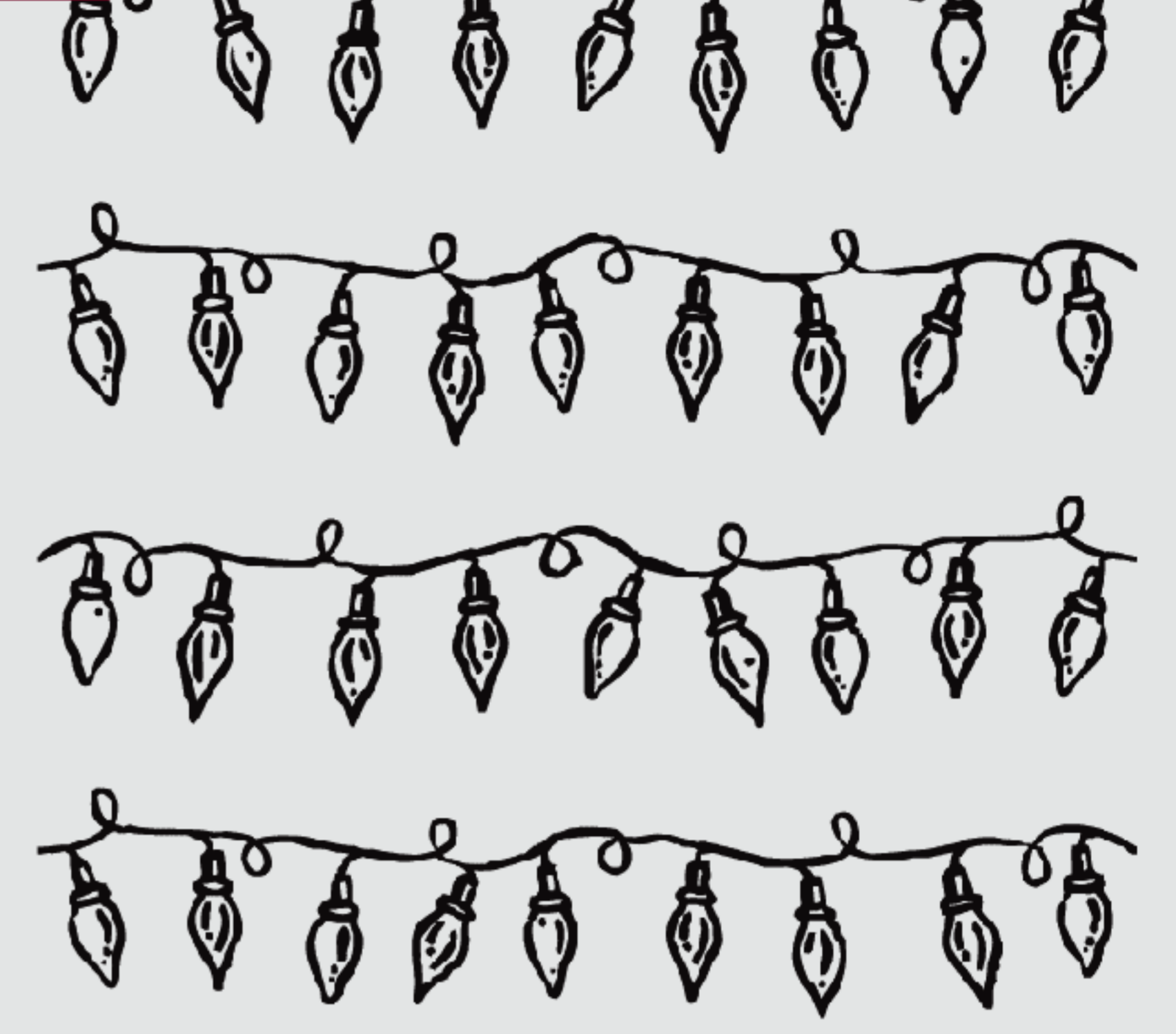
j



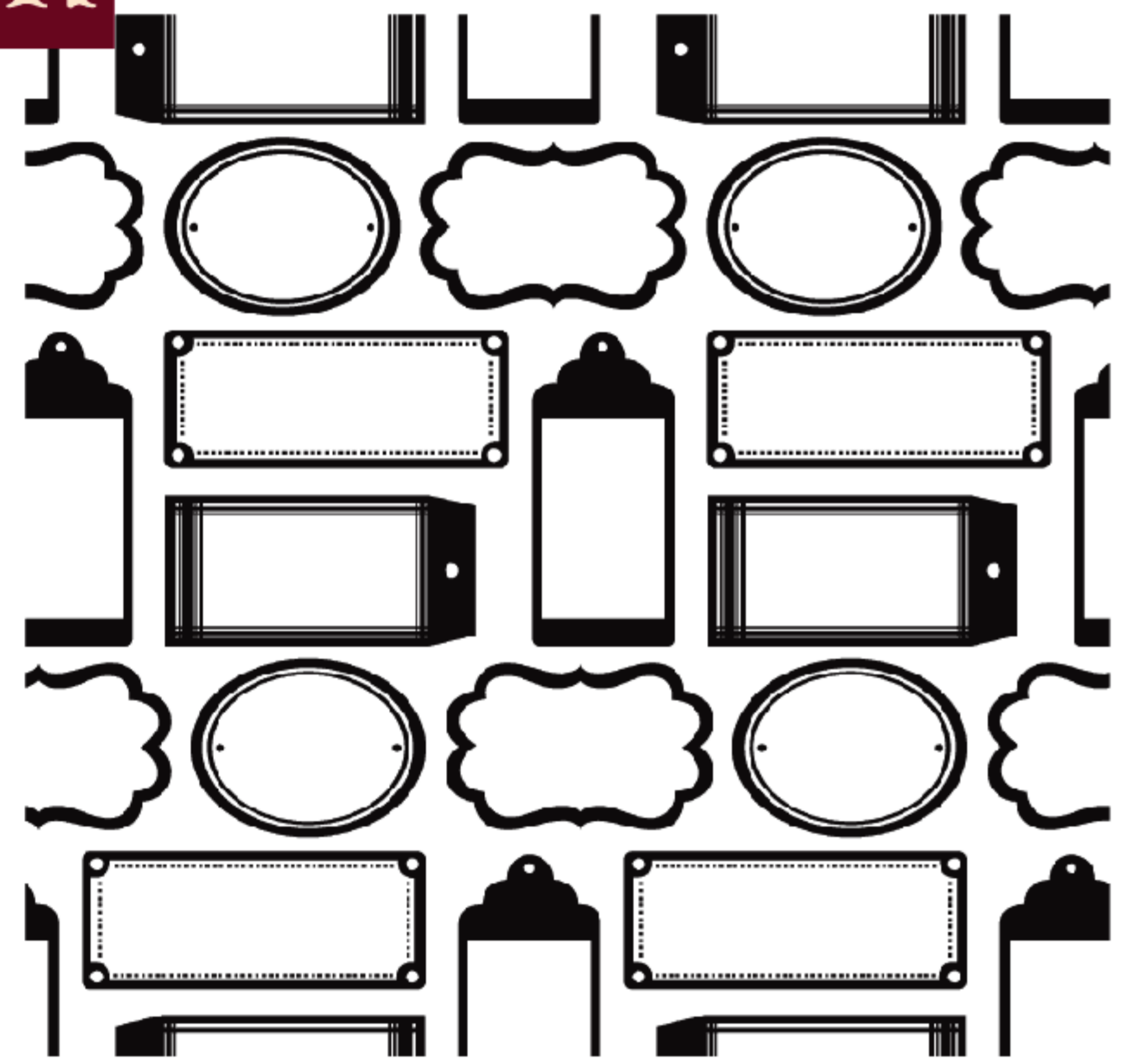
k



l



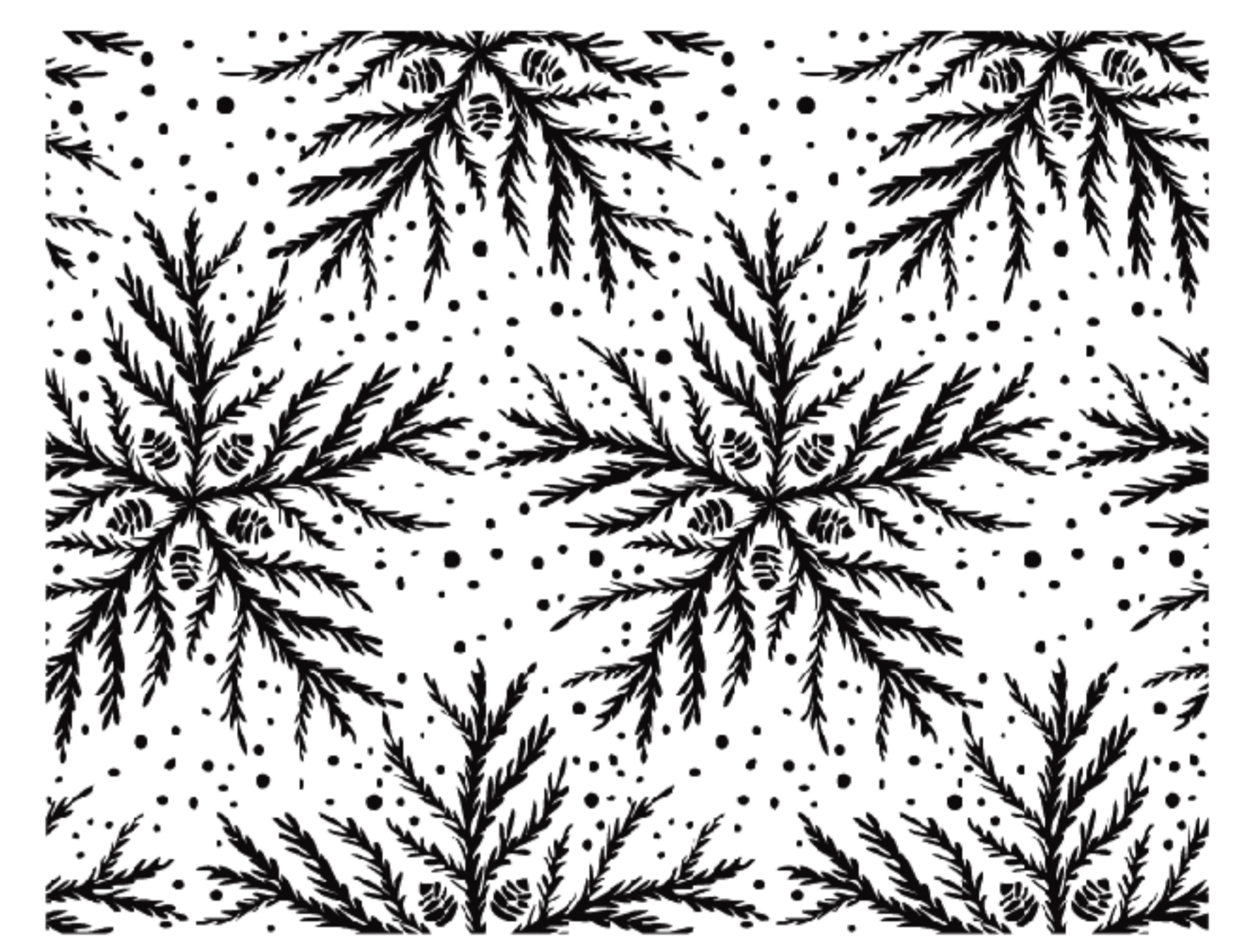
m



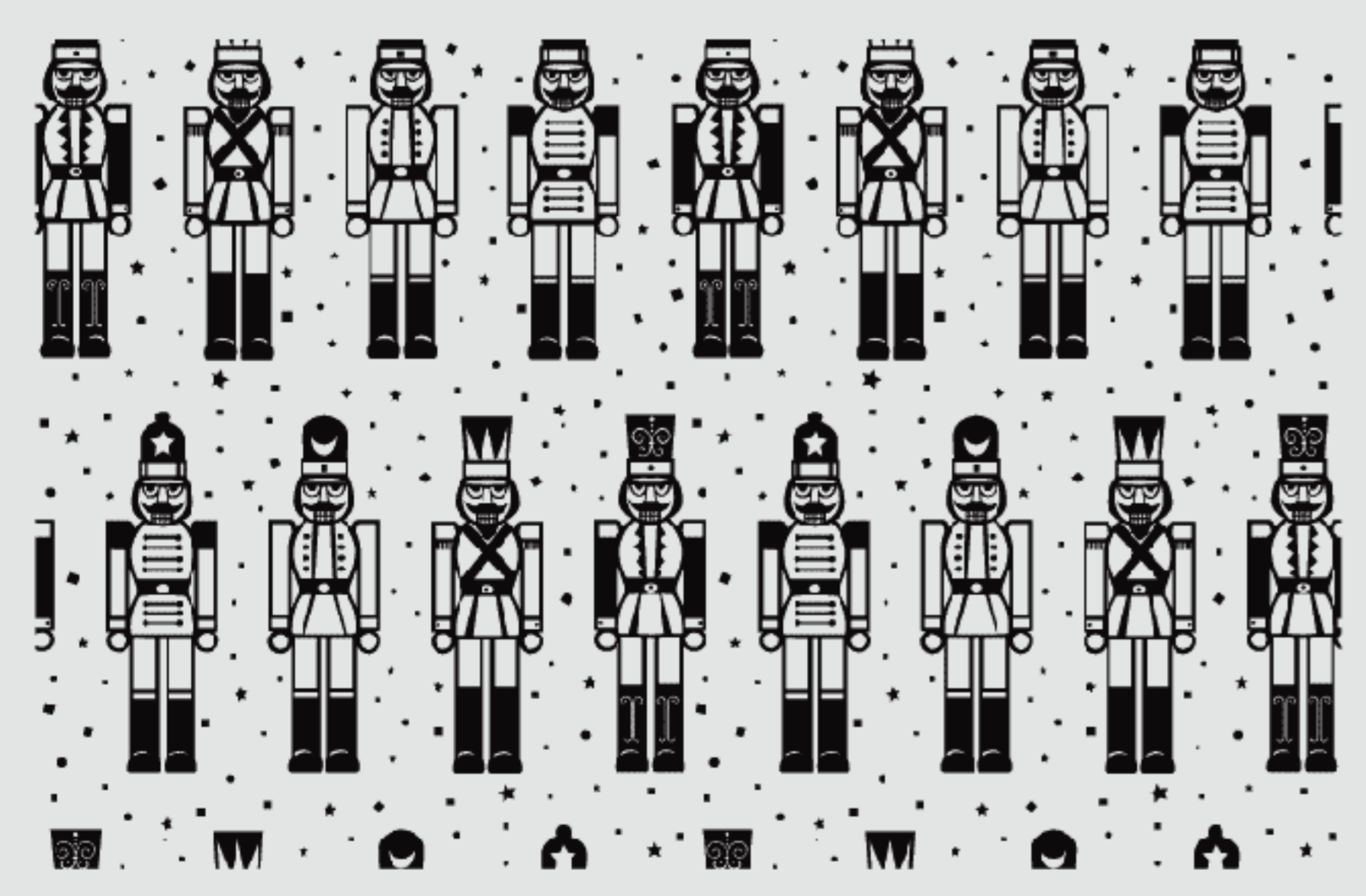
n



o



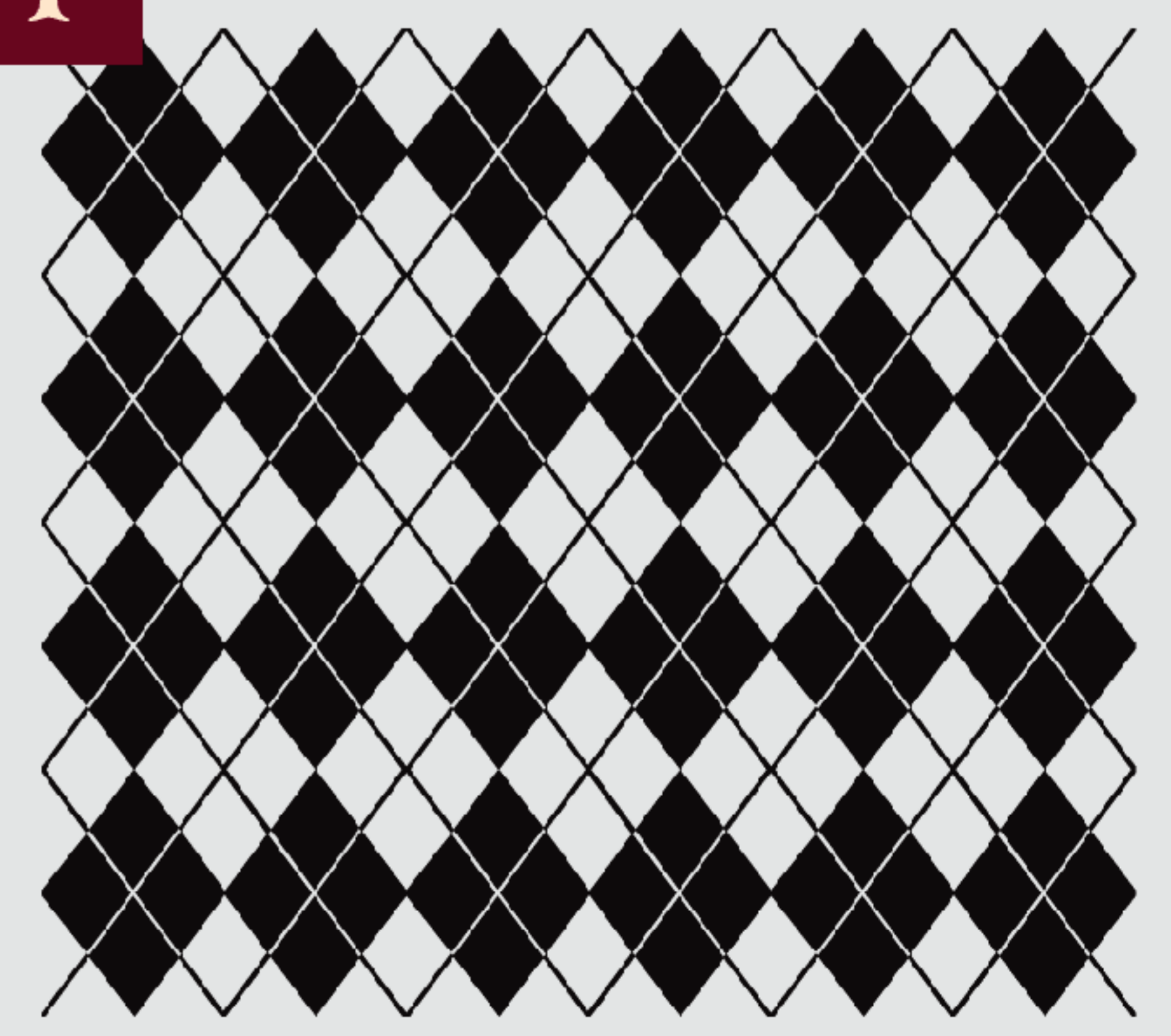
p



q



r



s



t



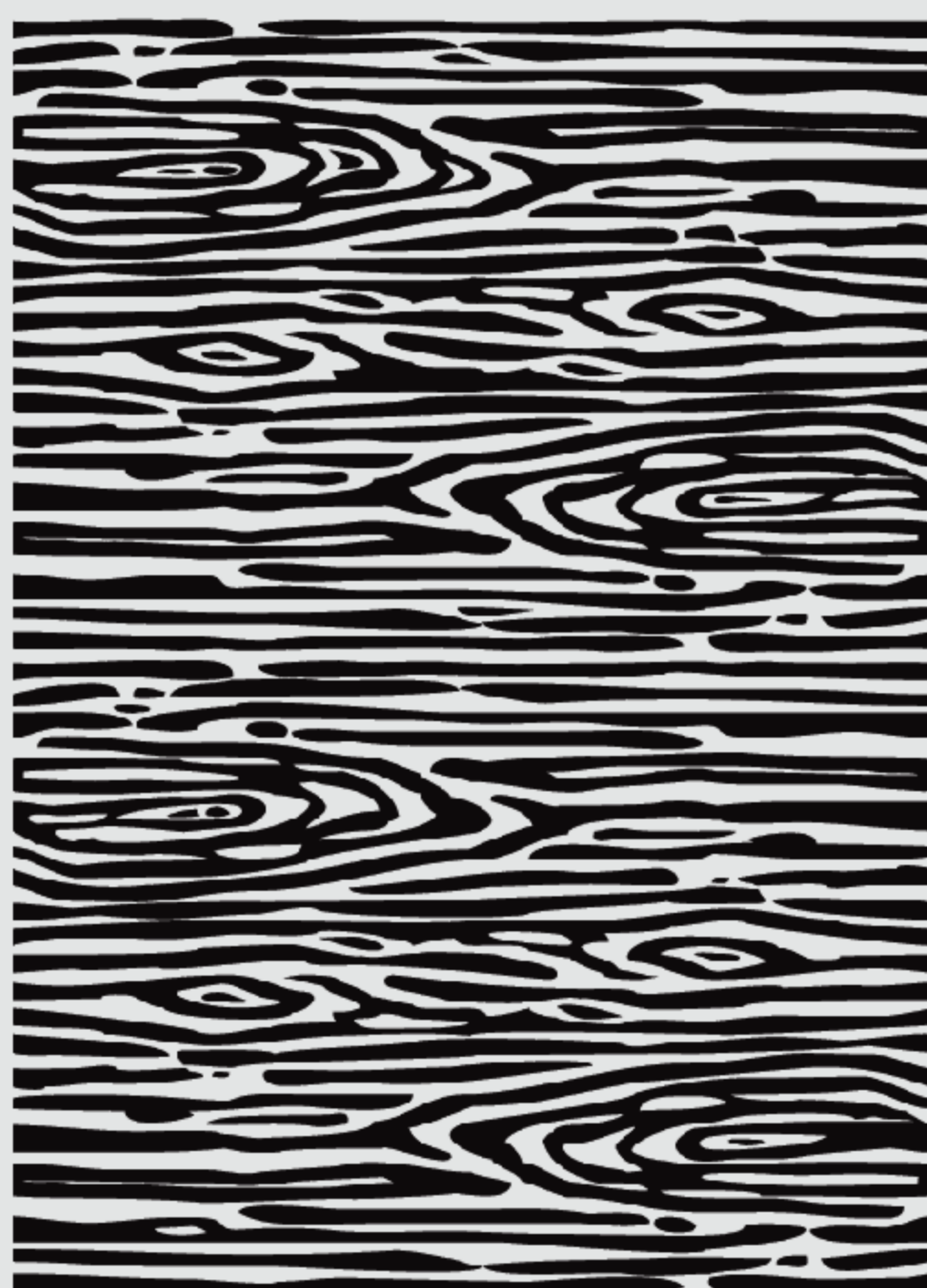
u



v



w



x



y



