



Wallflowers

by Laura Worthington

WALLFLOWERS is a unique dingbat font, featuring 26 unique hand drawn wallpaper tiles and their accompanying icons for standalone use.

How to use this font for seamless wallpaper patterns:

In Adobe Illustrator or InDesign, simply type the letter associated with the pattern you desire to use, and set the leading to have the same size as the font size.

For example, if the font size is 72pt, set the leading at 72pt.

In other applications, such as Microsoft Word, the patterns will automatically seam up and there will be no need to alter the leading. In some applications, you may need to adjust the leading to achieve the seamless wallpaper effect.



A
B
C
D
E
F
G
H
I

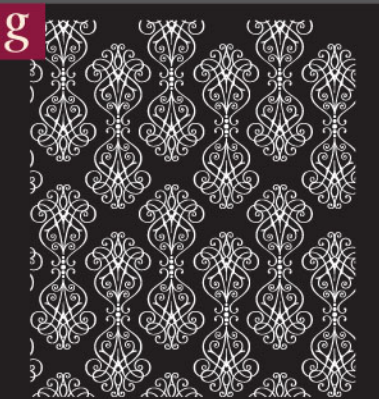
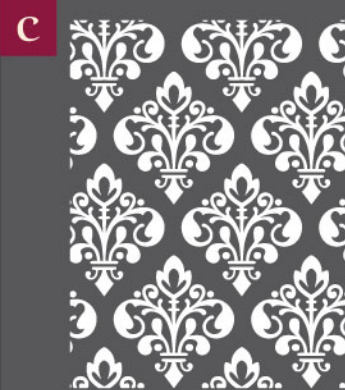


J
K
L
M
N
O
P
Q
R



S
T
U
V
W
X
Y
Z

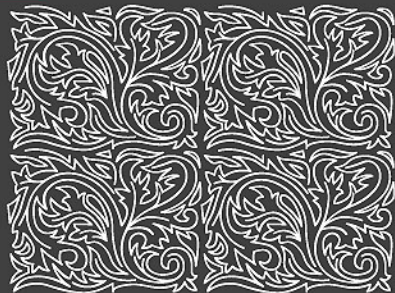




j



k



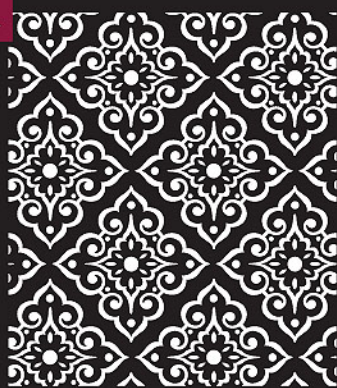
l



m



n



o



p



q



r



