

PRIMARY LOGO

The Scentsy Independent Consultant logo can be used by Consultants on their personal printed materials and websites to promote their business.

The space between the elements within the logo should not be modified. The logo should always appear upright, with clearance on either side and clearance on the top and bottom equal to the height of the lower case "S" character as it's used in the sized logo (see example).

SPECIAL NOTE: If you need a two colour option for this logo, use **Pantone 522** to replace the 80% screen.

PRIMARY TWO-TONE HEXAGON LOGO



Pantone 519
C 60 M 100 Y 0 K 40
#5c305e



Pantone 519 - 80%
C 45 M 57 Y 23 K 6
#8f7290

TYPE

The logo displays the company name in the *Scentsy Spirit* font, and the accompanying type in *Knockout-HTF34-Junior Sumo*. No other fonts should be used to alter the look of the Scentsy Independent Consultant logo.

Scentsy Spirit
1234567890!@#\$%^&*()_+=+
ABCDEFGHIJKLMN OPQRSTUVWXYZ
abcdefghijklmnopqrstu vwxyz

Knockout-HTF34-JuniorSumo
1234567890!@#\$%^&*()_+=+
ABCDEFGHIJKLMN OPQRSTUVWXYZ
abcdefghijklmnopqrstu vwxyz

SECONDARY LOGO OPTIONS

The following secondary logos may be used on specific Scentsy Family Store materials and by Scentsy Consultants to promote their personal business.

The space between the elements within the secondary logos should not be modified. The logos should always appear upright, with clearance on either side and clearance on the top and bottom equal to the height of the lower case "S" character as it's used in the sized logo.

ONE-COLOUR HEXAGON LOGO



(on white)



(on dark background)



(black & white)

ONE-COLOUR LOGO + STAR TRIO



(on white)



(on dark background)



(black & white)

ONE-COLOUR NO STARS LOGO



(on white)



(on dark background)



(black & white)

TWO-TONE TYPEFACE LOGO + SINGLE STAR



(on white or light colour only)



(black & white)

IMPROPER LOGO USE

The Scentsy Independent Consultant logos, including all designated secondary logo options, should not be altered in any way. Do not change the colours, other than directed, do not rotate, skew, stretch or distort the logos, do not add glow or other unapproved design elements and do not represent it in too small a size.



DONT CHANGE COLOURS
OTHER THAN DIRECTED



DONT ROTATE
OR SKEW



DONT STRETCH
OR DISTORT



DONT MAKE
TOO SMALL



DONT ADD GLOW

Installation

About the files

This font is available as a TrueType Font file (.ttf) or as an OpenType Font file (.otf). If you have an older Windows computer, install the .ttf file. If you have a newer Windows computer or a Mac, install the .otf file. Do not install both files as this may cause a conflict.

Step 1—Unzip the folder

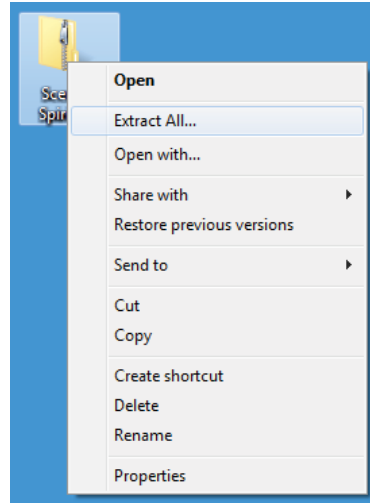
This font will come as a zipped folder (.zip) by email. Save the zipped folder to your documents folder, desktop, or other convenient location. Keep a copy of this file for backup.

To unzip the folder on a Windows computer, right-click on the folder and select Extract All. A window will pop-up showing the location where the unzipped folder will be placed. By default, this location is the same as the zipped folder, but can be changed if necessary. Click Extract.

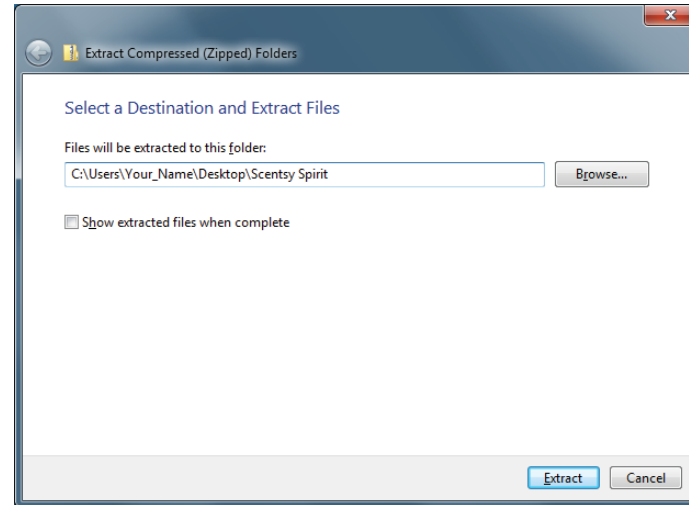
To unzip the folder on a Mac computer, double-click on the folder and it will be unzipped to the same location as the zipped folder.

Step 2—Install the font

Install the font by double-clicking on the .ttf or .otf file. When the pop-up menu appears, click on Install font (Mac) or Install (Windows).



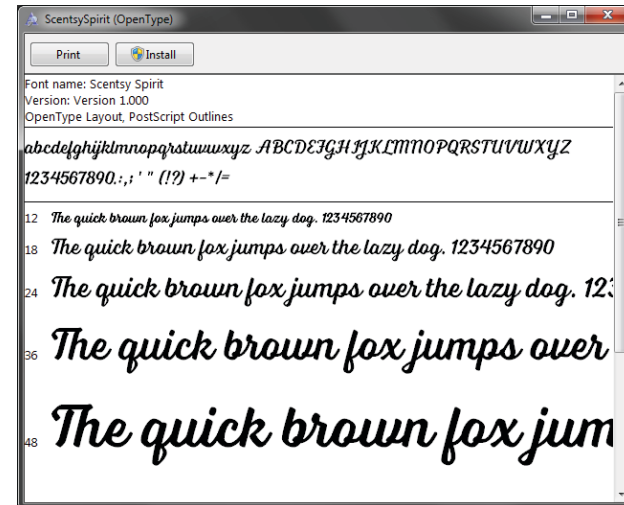
Right-click on the zipped folder and select Extract All



Choose a location for the font folder and click Extract.



Click Install Font.

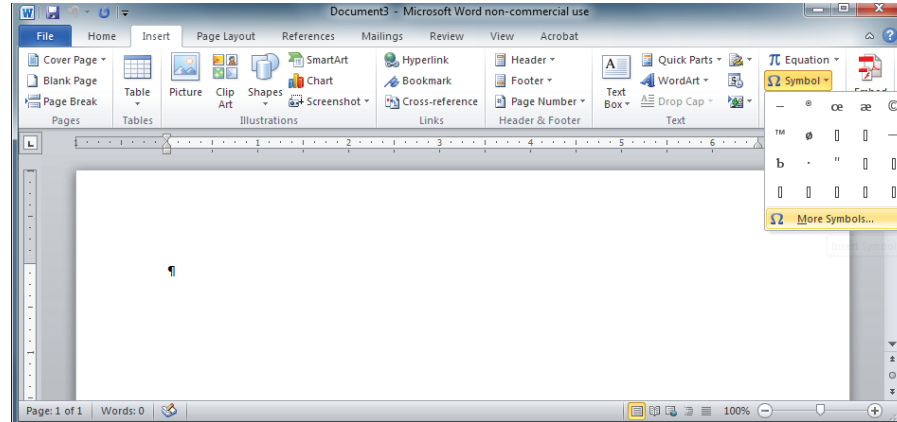


Click Install.

Insert Scentsy Spirit logo and letters

Method 1

Some programs have a glyphs panel or a symbol panel where the complete font including logos can be accessed. These programs include Microsoft Word and many Adobe products.



All letters in the Scentsy Spirit font can be inserted using Microsoft Word's Symbols panel. Click on Symbols and select More Symbols.



Select the Scentsy Spirit font from the Font drop-down menu then click on any letter, number, or symbol and click insert.

Insert Scentsy Spirit logo and letters

Method 2

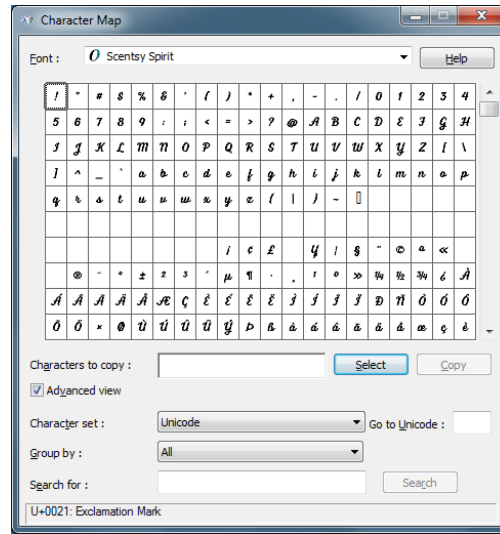
Character Map (Windows)

Character Map is a standard Windows utility and can be found in the Start Menu's accessories folder (Windows XP, Vista, 7) or in the Windows Accessories section of All Apps (Windows 8.1) or in Windows Accessories in the Start Menu's All Apps (Windows 10).

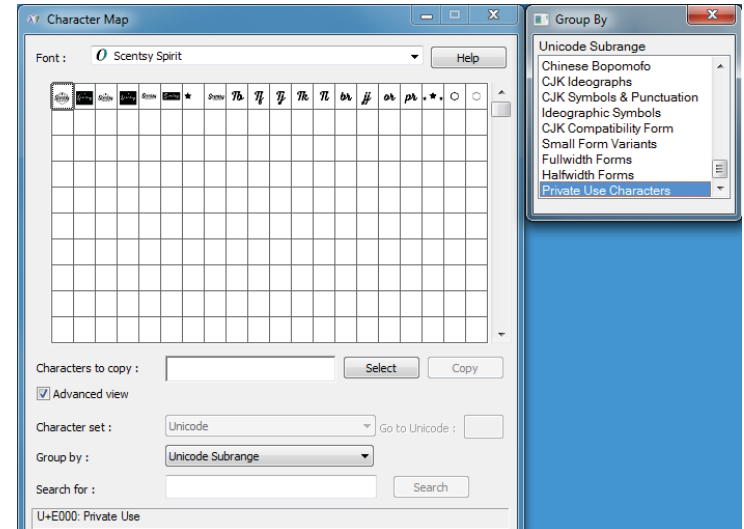
Select Scentsy Spirit from the drop-down menu. Character Map will show all characters. To quickly find the Scentsy Spirit logos, change Group by to Unicode subrange, and select Private Use Characters from the pop-up menu. Click on any character or logo and click Copy, then paste into your document. This method will work for almost any program.

FontBook (Mac)

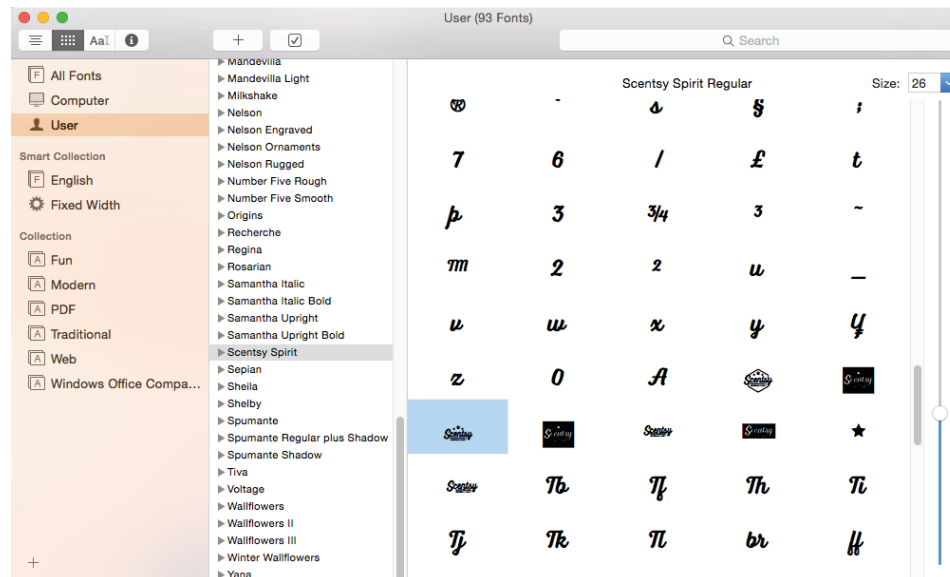
Font Book is a standard Mac utility program and can be found in Finder under the Go menu under Applications. Once FontBook is open, go to the View menu and select Repertoire. Click on User in the left panel, then select Scentsy Spirit. This will show all available characters and symbols including the logos. Click on any character or logo, then copy and paste it into your document. This method will work for almost any program.



Character Map—Select Scentsy Spirit from the font drop-down menu.



Character Map—Select Unicode subrange from the Group by drop-down menu, then select Private Use Characters from the pop-up menu.



FontMap—Select any character or symbol, then copy and paste it into your document.

Troubleshooting

The character or logo that I copied was not the same one that I pasted in.

If this happens then there may be a conflict in the font library. Try uninstalling and re-installing the font. If this does not work, try the following steps.

Mac

Open FontBook, select the font, then go to the File menu and select Validate Font. Next, go to the Edit menu and select Look For Enabled Duplicates. If there duplicates then the operating system is probably confusing the two files. Finally, try re-starting the computer in safe mode by holding down the shift key as it restarts. This will clear the font cache as well as run some other system checks. When its done, restart normally.

Windows

Locate the font folder by searching and look to see if you have both a .otf and a .tff file with the same file name. If so, uninstall one of the files (or both and re-install one). Use .otf files unless you are using an older Windows computer.

The letters or logo is cut off.

If this happens then the program that you are using is not adding enough spacing or leading between the lines. Look for the leading or spacing options in your program and increase the size until the letters or logo look correct.

There is too much space between lines of text.

If this happens then the program that you are using is adding too much spacing or leading between the lines. Look for the leading or spacing options in your program and increase the size until the letters or logo look correct.

I can't find the Scentsy Spirit font in my font list in my program.

If the program was open when Scentsy Spirit was installed then the font list may not have updated. Try closing and re-opening the program. If the font is still not in the list, then the font may not have installed or may have installed incorrectly. Open Character Map or FontBook and look for the Scentsy Spirit font. If you cannot find the Scentsy Spirit font , then the font did not install. Install the font again by double-clicking on either the .otf or .tff file. Do not install both files as this may lead to a conflict. If the font is installed, but does not show up in the font list in your program, try restarting your computer. If this does not work, then uninstall and then re-install the font.

When I paste the letters or logo in, something strange happens

If this occurs, try turning on ligatures. This option can usually be found as an advanced option in many programs. If you cannot find this option in your program, try searching in the help menu.